

Artificial intelligence



TYPES OF AI

- **Reactive Machines**
- **Limited Memory**
- **Theory of Mind**
- **Self-aware AI**

APPLICATIONS OF AI

- **Healthcare**
- **Finance**
- **Education**
- **Transportation**
- **Customer Service**
- **Manufacturing**





FUTURE OF ARTIFICIAL INTELLIGENCE

- **Trends and future development directions**
- **Potential impact of AI on society and economy**

THE IMPACT

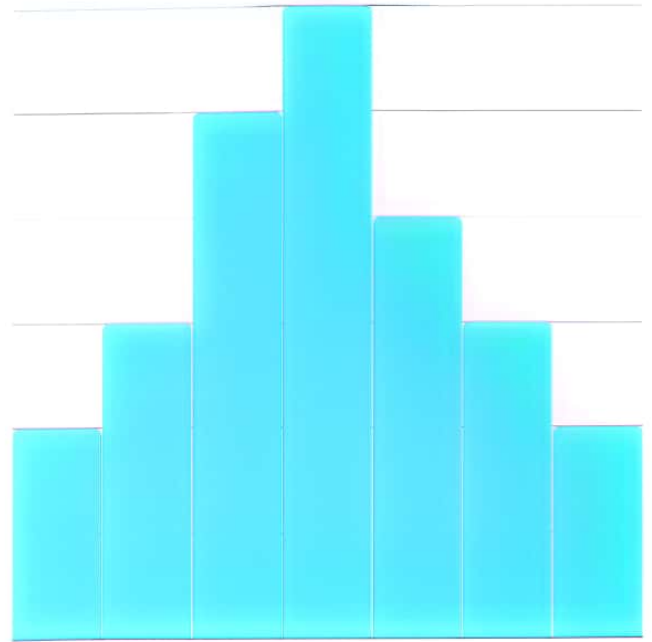
- **Artificial intelligence has various impacts on humans, including job automation, improved healthcare, efficiency gains, societal changes, ethical concerns, and potential for innovation.**





THE IMPACT ON EDUCATION

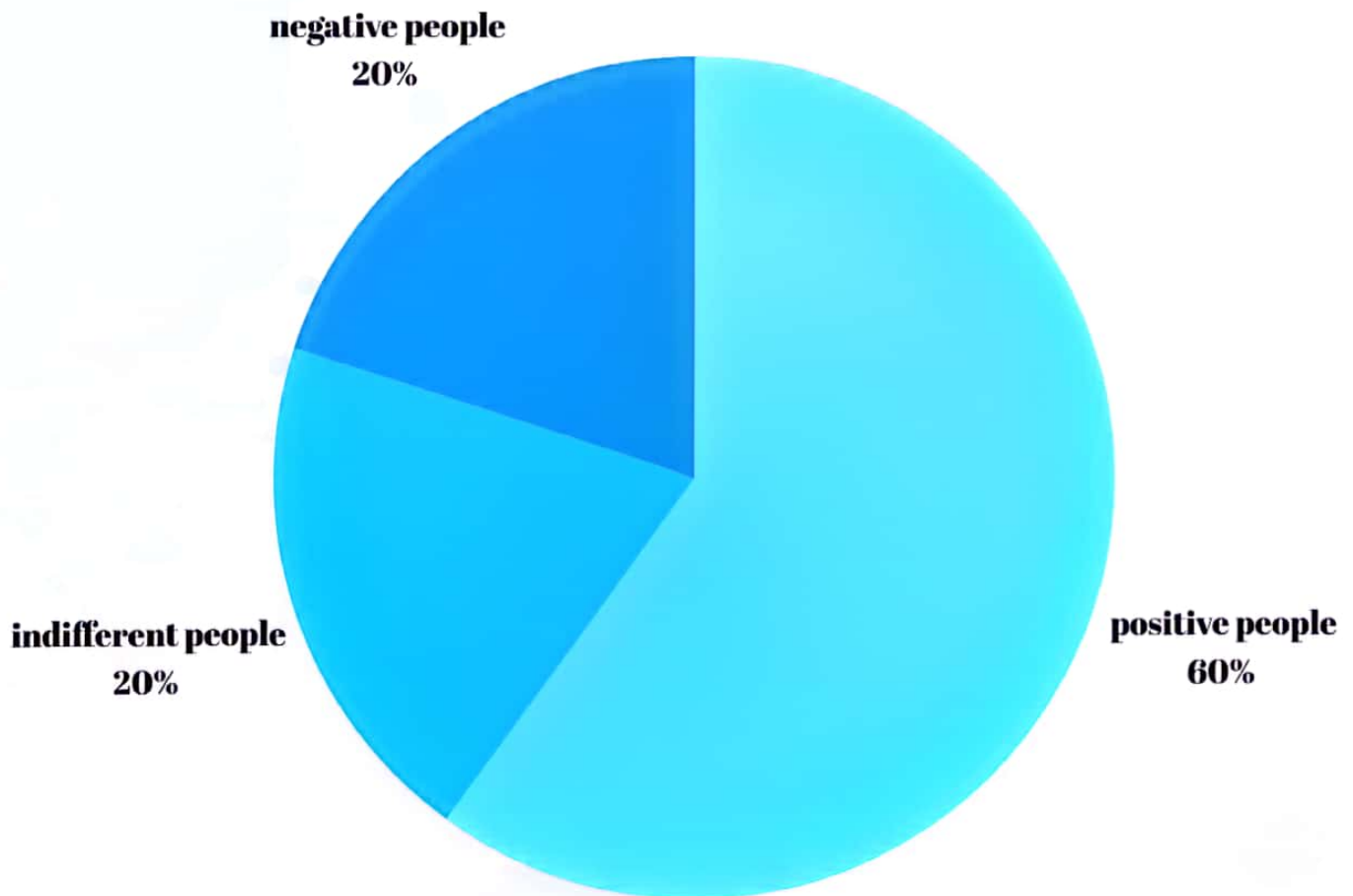
- **AI tailors learning to each student.**
- **It improves teaching and testing.**
- **AI aids accessibility for all.**
- **It streamlines school management.**
- **AI sparks learning innovation.**
- **It boosts performance through data analysis.**



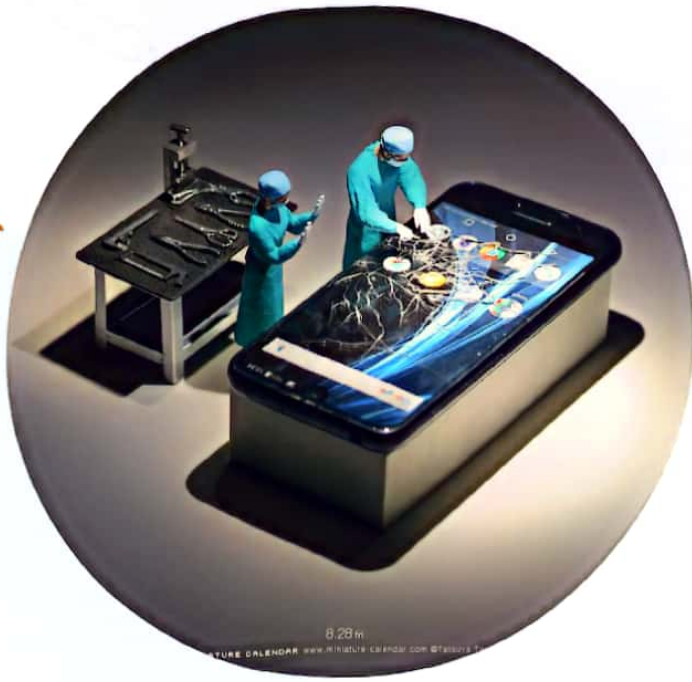
IN MEDICINE

- **Artificial intelligence has significantly improved diagnostic accuracy, personalized treatments, accelerated drug research, and provided more efficient and precise healthcare. Estimates suggest AI has helped in around 80-90% of breast cancer diagnoses.**

- **Surveys show that there is an increase in trust in AI with its familiarity and use in everyday life.**
 - **For example, according to recent studies, about 60-70% of respondents believe that AI will have a positive impact on their lives and society in general.**



- **Negative people have concerns about ethics, security and the impact on jobs.**



TOP #5 APPLICATIONS WITH ARTIFICIAL INTELLIGENCE

- 1. Virtual assistants and chatbots for customer service.**
- 2. Voice recognition and smart assistants like Siri or Alexa.**
- 3. Facial recognition for security.**
- 4. Personalized recommendations on streaming platforms.**
- 5. Intelligent navigation systems for traffic.**

IN CONCLUSION...

- **Given the significant impact of artificial intelligence on society, we must be mindful of how we manage its progress and utilization.**

